

Benton County Arkansas Tornadoes

In May of 2024 the strongest tornadoes ever recorded in the area (type EF3) hit Rogers, AR, with 3 second gusts with wind speeds up to 165 MPH. ModWerks has Linea Screens installed in this area, located on the roof of an elementary school.

The screens, which were installed 3 years earlier were not only roof mounted, but they were 100% ballasted. Fully 100% ballasted means the screens around the full perimeter of the school were not fastened to structural steel or to the HVAC equipment. They were self-supporting, using only weighted ballast boxes. The screen system was carefully designed to load direct dead-weight directly onto the building joists beneath the roof, and the design wind speed was designated at 115 MPH.

After the windstorm, ModWerks received news of the damage. Although some of our support members and attachment point had failed, the screens were mostly intact and still up on the roof! This was a proud moment for the Linea Screens engineering and sales staff. Never before had their 100% ballasted system been put through such a test. Since the event, the ballasted screen system has been repaired. See news excerpts and product photos below...

The news reported:

Eight dead in Arkansas, including three in Benton County, after violent storm hits the state early Sunday :: May 26, 2024 at 8:10 a.m. | Updated May 26, 2024 at 10:28 p.m.

by Tracy Neal , Remington Miller , Bill Bowden

BENTONVILLE — The state's death toll stood at eight — including three in Benton County — as of an 8 p.m. briefing Sunday led by Gov. Sarah Sanders at the Benton County Sheriff's Office.

Efforts to account for everyone who may have been affected by the storm are ongoing, she said.

The governor will remain in Northwest Arkansas on Monday along with officials of her administration to render assistance while the search and recovery continues, she said. Sen. John Boozman and U.S. Rep. Steve Womack, both of Rogers, joined Benton County Judge Barry Moehring, the mayors of Bentonville and Rogers along with other civic leaders at the briefing.

About 73,000 Arkansans were still without power Sunday night, the governor said, down from about 120,000 earlier that day. Names and other details of the victims were not released.

"It's a miracle we don't have way more fatalities," Oxford said, adding the storm left behind "an absolute mess." Moehring said at Sunday's briefing the number of

injuries in Benton County seemed remarkably light considering the severity and extent of the storm damage.

The weather service also reported via social media its survey team had found EF-3 tornado damage near Decatur. "Yes, we did have tornadoes in Northwest Arkansas — mainly in Benton County, Carroll County and Boone County," said Mike Lacy, a meteorologist with the National Weather Service in Tulsa, which monitors seven counties in Northwest Arkansas, including Benton and Carroll.

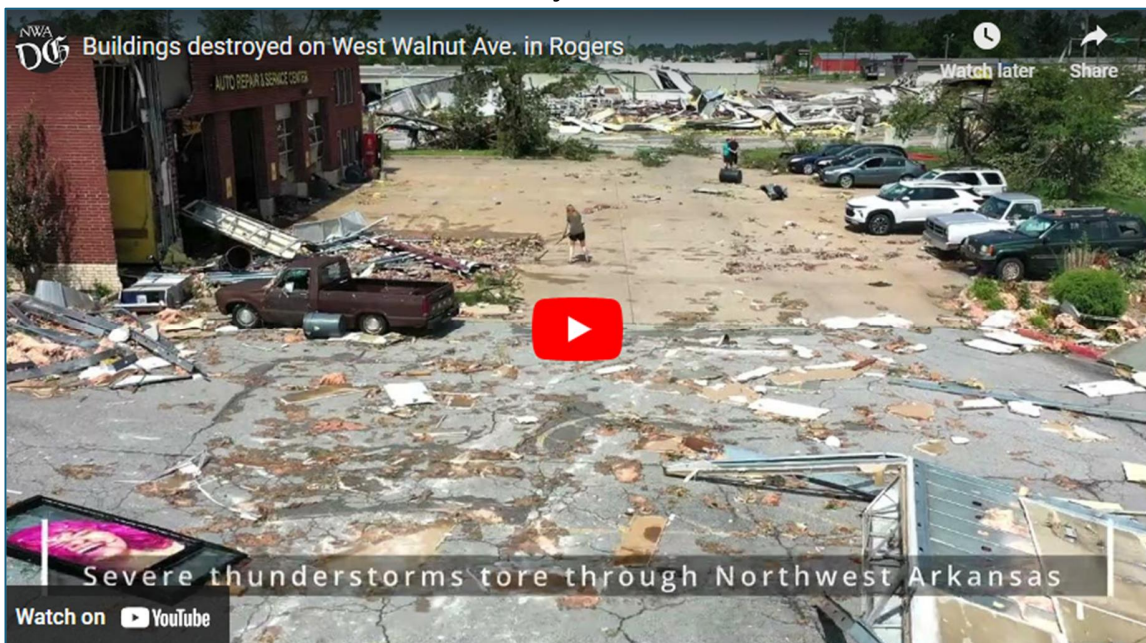
The storm passed from Oklahoma into Benton County around 12:30 a.m. Sunday (May 26th, 2024).

The storm snapped more than 300 utility poles and damaged several hundred spans of electrical wire, according to the SWEPCO release. Another post on the department's Facebook page said there was a lot of structural damage to buildings around the area of 24th and Walnut.

The storm damaged some area school buildings. Rogers Public Schools announced Sunday night its schools will be closed all this week, bringing an end to the school year. The School District's last day originally was set to be Thursday.

Pretty much all of Rogers' schools have debris everywhere, said Jason Ivester, communications director. Lingle Middle School and Northside and Westside elementaries took the brunt of the damage in the district; all three have serious roof damage and HVAC issues, Ivester said.

Street view, ½ mile north of Westside Elementary School

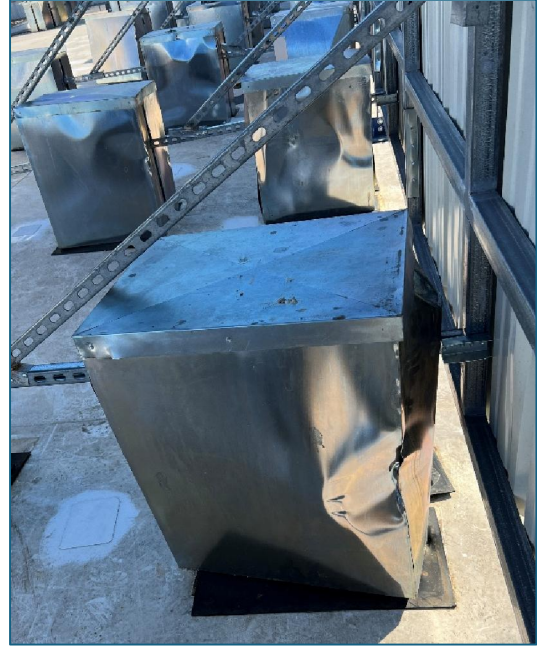


Damage in a residential area of Rogers, AR



Photos of Linea Screen damage





LINEA

equipment screens by

ModWerks

Linea Screens by ModWerks
502-939-4110
ModWerks@hts.com

www.LineaScreen.com